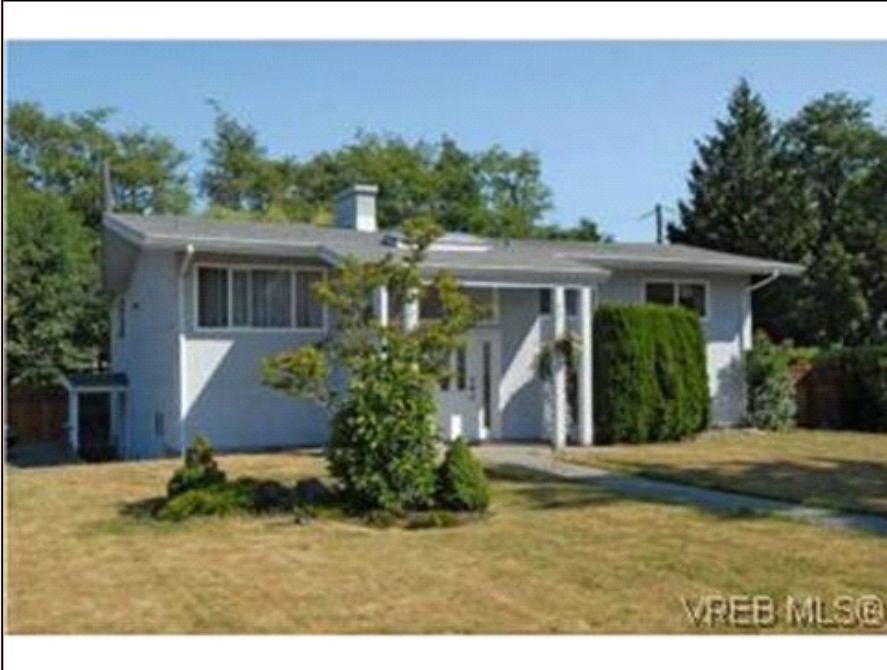


656 Vanalman Victoria

PROPERTY DETAILS



Listing Price: **\$585,000**
Listing Address: 656 Vanalman
Victoria BC V8Z 3B1
Bedrooms: 6
Full Baths: 3
Partial Baths: 0
SQ FT: 2956
Lot Size: 10455
Heat Source: Electric
Schools: SD61

QR Code:
On a SmartPhone?
Scan the QR code
to see this listing



PROPERTY DESCRIPTION

This won't last!! This beautiful fully updated open concept home is approx 3000sqft on a large 10,000 + sqft lot & nestled in a park like setting in a great neighborhood! Backing on to Colquitz Creek & Copley Park, this like new home has 6bds,den & 3bths which includes a large 2/3bdrm suite. Newer roof, 2 skylights, 2 new kitchens & appliances, new windows, upgraded electrical, HWT, fences ... too much to list! Major reno done which created a large living room with vaulted ceilings over looking the back yard. Homes like this rarely come-up & this is the first time on the market in over 40yrs. Very central to Schools, parks, & bus

CONTACT INFORMATION



Island Home Marketing
RE/MAX Alliance
robsoldit.com
770B Hillside Avenue
Victoria BC V8T 1Z6
250.704.6970
250.386.8180
rob@robsoldit.com

The Experience Will Move You



Rob Cvitanovic
(sit'an'oh'vik)
Direct: 250-704-6970



Equal Housing Opportunity

Property information deemed reliable but not guaranteed and should be verified.

Copyright © 2003-2012 Real Pro Systems LLC. All rights reserved.